

**OTOMΣ**

AUTOMATION DESIGNING & SERVICES

WORLD OF  
***MODERN LUXURY***





## About OTOME Automations

At OTOME, we are revolutionizing the way people experience automation by blending smart technology with sustainability. Founded with a vision to create intuitive, eco-friendly spaces, we specialize in providing cutting-edge home and business automation solutions tailored to the needs of modern living. From energy-efficient smart switches and sensors to advanced security systems, we seamlessly integrate technology into any environment while promoting greener, more sustainable practices.

Our mission is simple: to enhance comfort, security, and energy efficiency through innovative, environmentally conscious automation products. Whether it's automating homes, offices, restaurants, or hospitals, we offer personalized solutions that not only elevate your lifestyle but also reduce your carbon footprint.

With a commitment to excellence, innovation, and sustainability, OTOME is not just automating spaces – we're shaping a future where connected living and environmental responsibility go hand in hand.



# PRISM SERIES

**OTOMΣ**  
AUTOMATION DESIGNING & SERVICES



## COLOURS OPTION



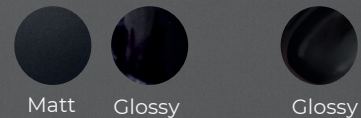
## FRAME COLOURS OPTION



The **Prism Touch Series** Edge Switches offer the ultimate convenience with remote control and mobile application functionality, providing luxury at your fingertips. Designed for ease of use, it caters to both the elderly and the new generation, making it a versatile solution for modern living.

- **Operating Voltage:** 230 V AC
- **Technology:** Capacitive Sensing with 1 Million Touch Capacity
- **Load Capacity:** 6 AMP Max Current per Load
- **Operating Environment:**  
Temperature: 0°C to 45°C  
Ambient Humidity: 5% to 90% RH
- **Output Options:** Wi-Fi / GPIO / UART / I2C
- **Communication Type:** Two-Way

Acrylic Finish Glass Finish



Download SmartLife App



# IMPLANT SERIES





The **Implant Series** Smart Switch is designed to seamlessly upgrade your existing switches without requiring replacements. It offers both manual operation and smart control options, making it versatile for commercial and residential applications.

**Operation Mode:** Manually operated with app and voice control options.

**Current Rating:** 16 Amps, ideal for high-power devices.

**Operating Voltage:** 240 Volts.

**Circuit Type:** 2-way switching functionality.

**Protection Rating:** IP65, offering dust and water resistance.

**Certifications:** CE Certified.

**Controller Compatibility:** Works with Google Assistant and Amazon Alexa.

**Control Methods:** Can be operated via mobile app and voice commands.

**Connectivity Protocol:** Wi-Fi enabled for easy integration into smart home systems.

**Dimensions:** Compact size (10.4 x 7.8 x 3.1 cm) with a lightweight design (136 g).

**Specific Use:** Suitable for both commercial and residential purposes.



Download SmartLife App



SMART LOCK







The OTOME **Smart Lock** offers fast fingerprint recognition, RFID card access, and a fine touch keypad for up to 100 PINs, ensuring quick and secure entry. It features user record history, low battery indication, and an emergency power option via USB. Plus, the auto-locking system ensures your door locks automatically once closed.

**Power Supply :** 4.5V-6V Unlock  
**Methods :** Fingerprint / RFID card  
Passcode / Mechanical Key / Application  
**Quiescent Current:** <50-65UA  
**Passcode Length :** 6-8 Bits  
**Card Volume:** 100 pcs  
**Password Volume:** 100 pcs  
**Finger Volume:** 50 pcs  
**Administrator:** 9  
**Lower Voltage Alarm :** 4.5+0.2V  
**Operating Temperature:** -10 C~60 C  
**Door Thickness:** 38-120mm  
**Material:** Aluminium Alloy  
**Size:** 358\*70MM

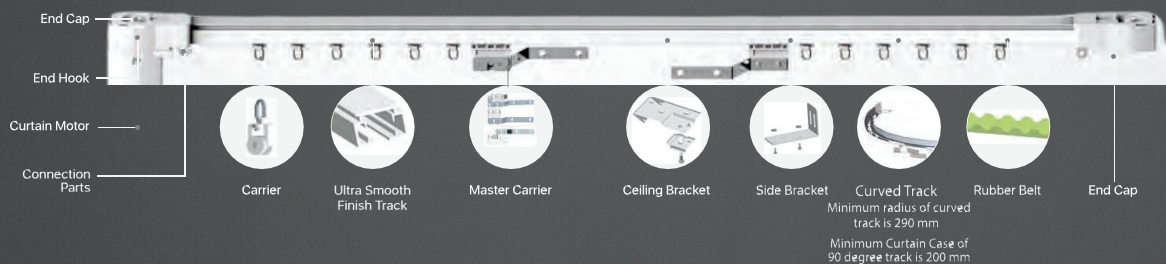
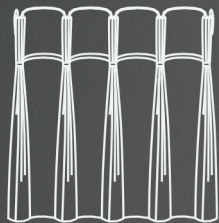
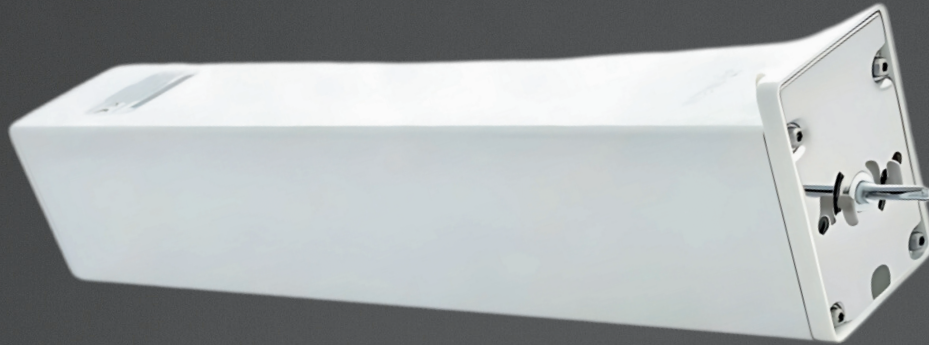


Download SmartLife App



# SMART CURTAINS MOTOR

**OTOMΣ**  
AUTOMATION DESIGNING & SERVICES





The OTOME **Smart Curtains Motor** is engineered for powerful and smooth operation, making curtain automation easy and reliable. With its robust build, it can handle heavy curtains and offers seamless integration with other smart home systems, ensuring both convenience and safety. Whether for home or office, this motor brings effortless control to your window coverings.

- **Voltage:** 200V, ensuring consistent performance.
- **Weight Capacity:** Supports curtains up to 100 kg.
- **Maximum Length:** Handles curtain tracks up to 12 meters long.
- **Torque:** 2 Nm for smooth and efficient motor operation.
- **3rd Party Automation:** Compatible with various smart home systems.
- **Obstruction Protection:** Automatically stops if an obstacle is detected.
- **Push-Pull Start:** Allows manual operation with a gentle push or pull.



Download SmartLife App



## OTHER SERVICES



SMART MOTION SENSOR



SMART SMOKE DETECTOR



SMART GAS LEAKAGE SENSOR



AC SMART CONVERTER



SMART CCTV



SMART ELECTRICITY METER



SMART WATER TANK



CUSTOMISED DASHBOARD



RESIDENTIAL AUTOMATION



COMMERCIAL AUTOMATION



OFFICE SPACE AUTOMATION



HOUSING SOCIETY AUTOMATION



INDUSTRIAL AUTOMATION



INDUSTRIAL AUTOMATION

**Everything you can  
imagine is real.**





*-Pablo Picasso*



# OTOME


AUTOMATION DESIGNING & SERVICES



-  [otome.co.in](http://otome.co.in)
-  [@otome\\_automations](https://www.instagram.com/otome_automations)
-  [@OTOME-Home\\_automation](https://www.youtube.com/@OTOME-Home_automation)
-  [@otome](https://www.linkedin.com/company/otome)

## OTOME AUTOMATION SERVICES

**OFFICE :** OTOME Automations, office no:106, Arihant Avenue, Wanwadi, Pune-411040

 +91 84467 38270

 [info@otome.co.in](mailto:info@otome.co.in)

 [otome.co.in](http://otome.co.in)